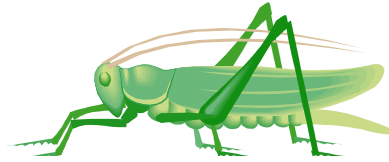


INSECTS & PLANT DISEASES



Bugs - Dr. Bev Gerdeman, WSU Research Associate “Bugs, Glorious Bugs”

Chuckanut Judges Council

Your group has an opportunity to enjoy an outstanding program while also contributing to the Chuckanut District's Flower Show Schools. Members of the Chuckanut Judges Council are willing to speak on the topic of your choice for a fee of \$50.00, which will be kept in a dedicated fund for the benefit of our Flower Show Schools, plus mileage, which will help reimburse the speaker's expenses. Contact chuckanutwa@clearwire.net or Phone 360-424-8635

Diagnosing Plant Diseases Diana Wisen – Master Gardener 360-336-8958 Pruning,
Diagnosing Plant Diseases

Garden Insects – Dr. Beverly Gerdeman, Entomologist, Washington State University Ag.
Research Center, 360-428-4270 ext. 221 or www.skagit.wsu.edu/mg

Plant Diseases - Dr. Lindsey du Toit, WSU Vegetable Seed Pathologist and Diana Wisen,
Master Gardener. “Step-by-Sep Guide to Diagnosing Plant Diseases”

Polinators - Iola Ratcliff, Experienced local gardener and active member of several garden
clubs and Chuckanut District of WSFGC, NGC Student Judge, “Polinators – Mason Bees and
others” 360-848-9800 or Email iolaratcliff@msn.com